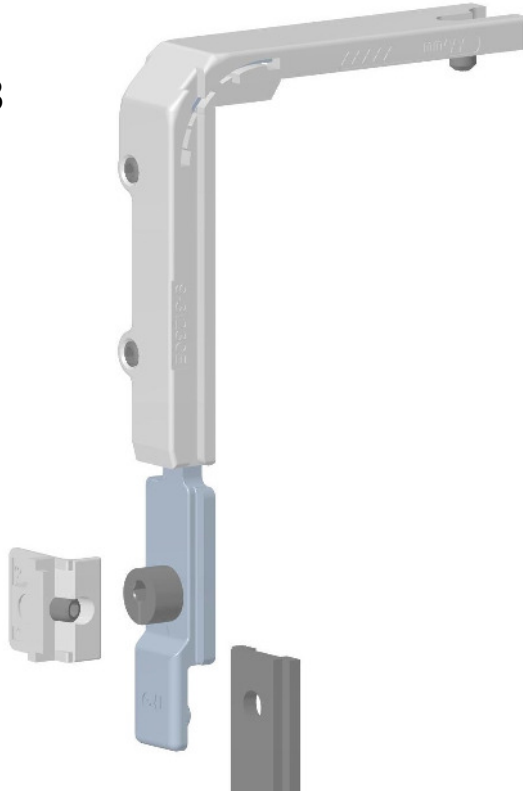


ALU- modular hardware system

Corner-drive

6

JAK 8



- Fastening with 2 locking screws
- Without mishandling device

ALU 06



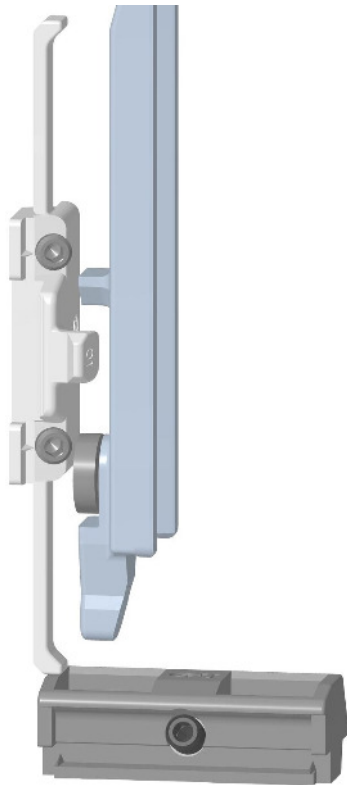
- Toolless fastening by means of clamping fork
- Mishandling device, non-handed
- Activation through standard striker
- Also available without mishandling device

ALU- 06 modular hardware system

Tilter / T&T striker

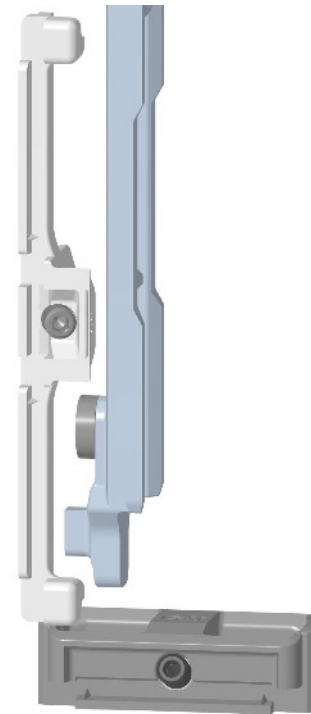
7

AK 8



- T&T striker with 2 locking screws and short locking cam

ALU- 06



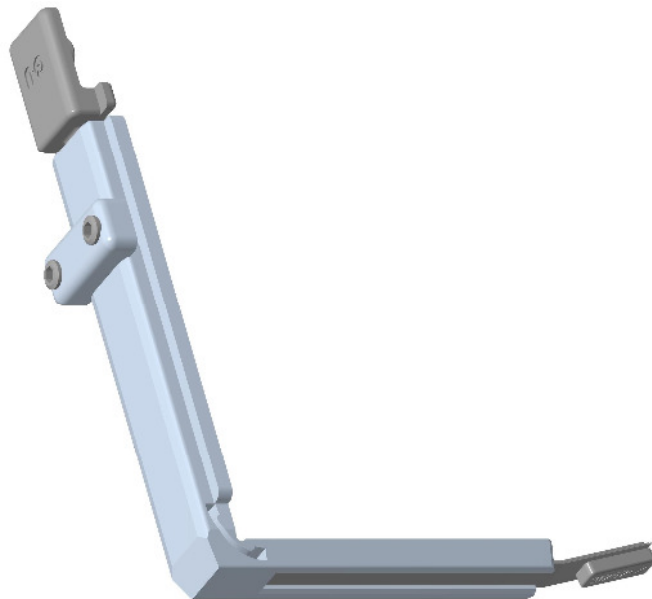
- T&T striker with 1 locking screw and wide locking cam

ALU 06 modular hardware system

Corner-drive for additional locking point

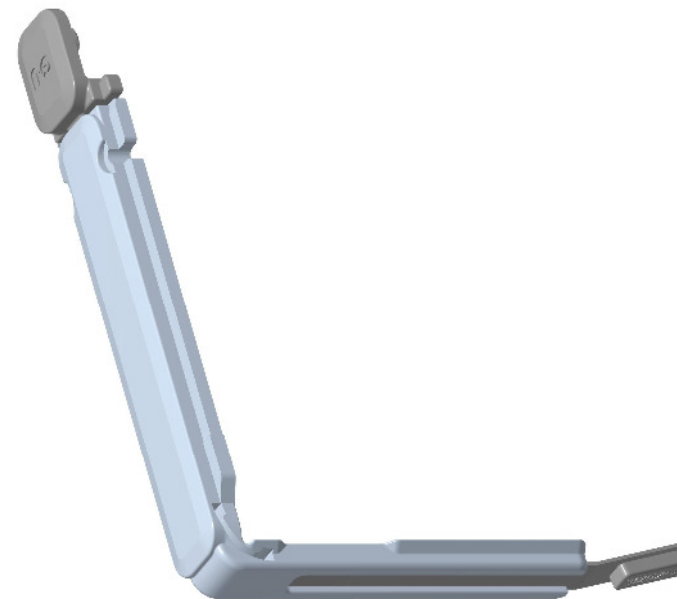
8

AK 8



- Fastening with 2 locking screws

ALU 06

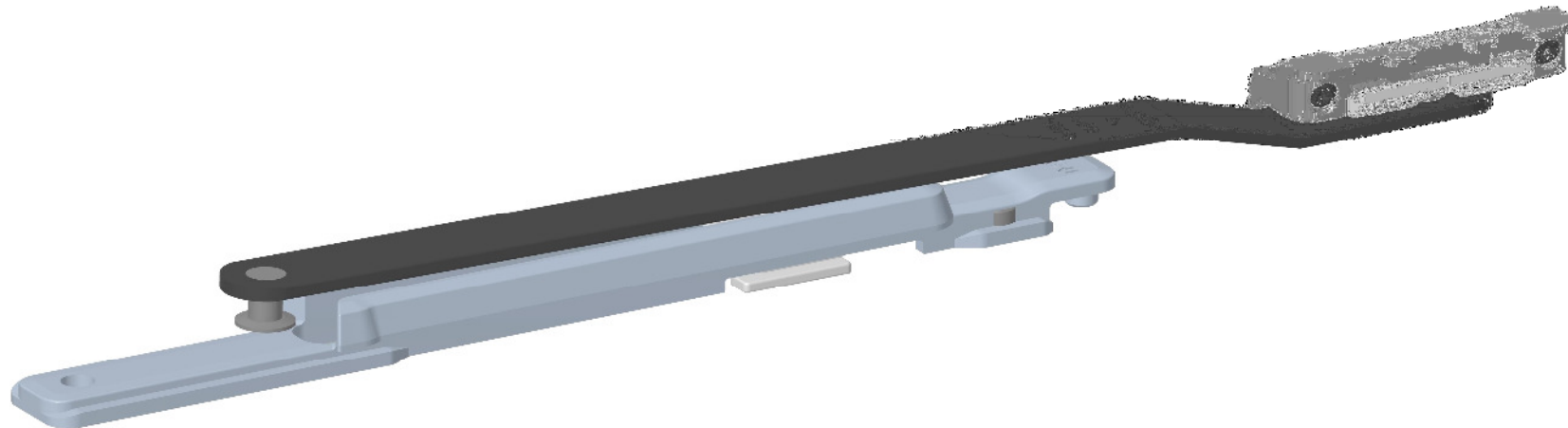


- Toolless mounting:
 - Just insertion into profile groove
 - No locking screws, no clamping fork
 - The component is automatically fixed by sliding the stay, resp. the tilter over it

ALU 06 modular hardware system

Additional stay (from SW 1350 mm)

9



- Suitable for surface-mounted and concealed hinge-side
- Clampable stay-arm for all frame grooves 10/14 up to 14/18
- Fast assembly with only two components:
Stay-guide on sash and stay-arm frame
- Stay-arm with integrated detent spring for fixing the sash in Turn-Only position

ALU 06 modular hardware system

Handle

11

Free design in the handle

Geared turn handle
SPACIO



BELCANTO turn handle
with insertable gear



Rosette-free turn handle
with insertable gear



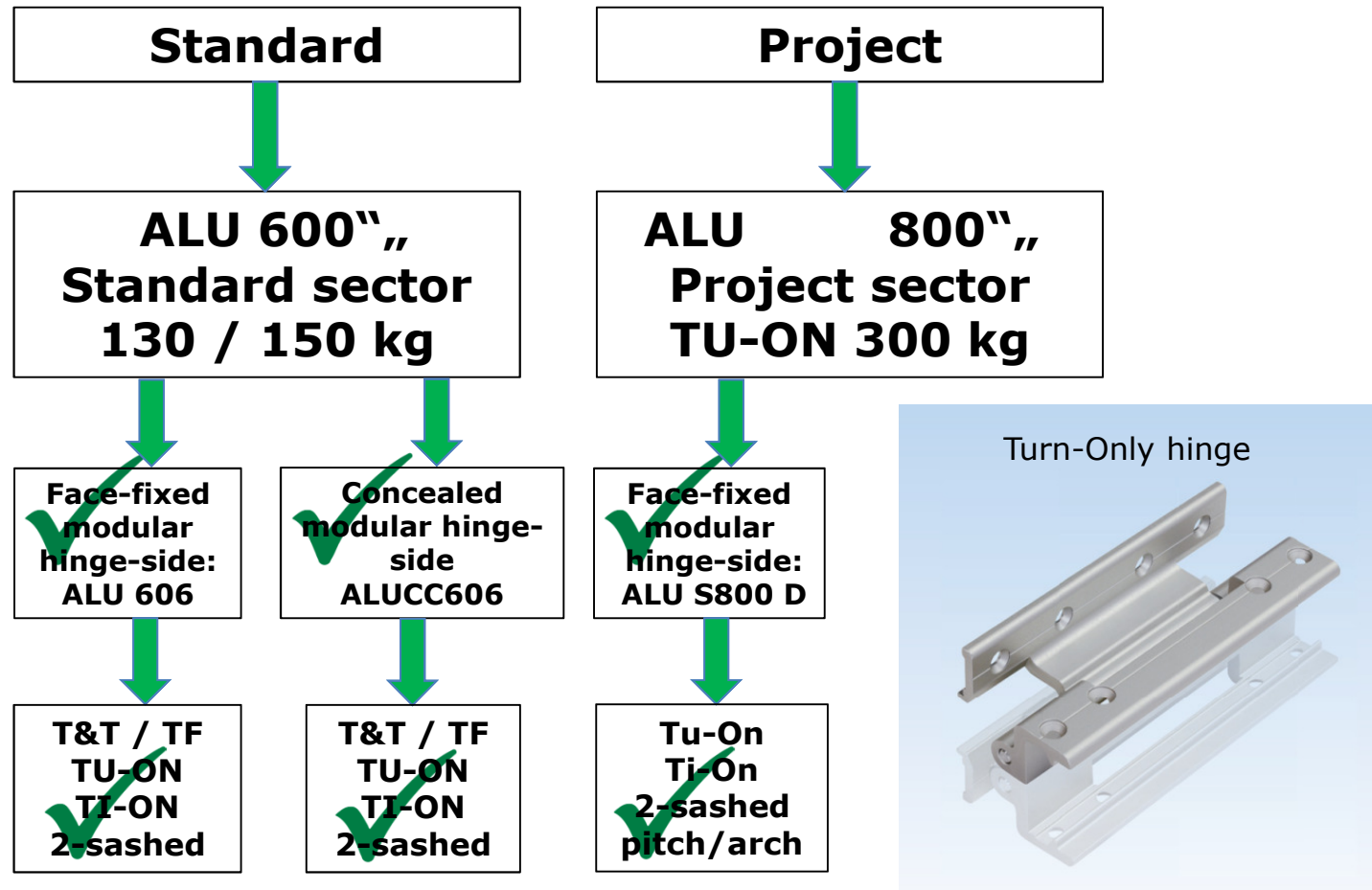
ALU 06 modular hardware system Insertable gear with and without mishandling device

- Version with or without mishandling device for Turn-Only and Tilt&Turn
- Optimised support in profile groove thanks to 15 mm punching width and 23 mm backset
- Efficient processing: profile recesses are punched
- Stylish appearance



ALU- 06 modular hardware system

Hinge-sides



ALU- 06 modular hardware system

Product name structure

16

Example: **ALU CC606**

- ALU = Family name for the T&T hardware range for 15/20 Euro-groove in the sash
- Fastening of hinge-side:

—	=	clamped
CC	=	clamped concealed
S	=	screw-fixed
- Hinge-side:

6	=	standard (sash weight T&T + TU-ON 130/150 kg)
8	=	Project (Sash weight TU-ON 300 kg)
- Central locking system:

06	=	Ø6 mm coupling punch hole, coupling from the top Standard connecting rod, RC not possible
10	=	Ø10 mm coupling punch hole, coupling from the bottom, slim aluminium connecting rod, RC 2, RC 3 possible

ALU- 06 modular hardware system

ALU- 606 hinge-side

Pivot-rest and stay-bearing

max. 80 kg
sash weight



max. 130 kg
sash weight

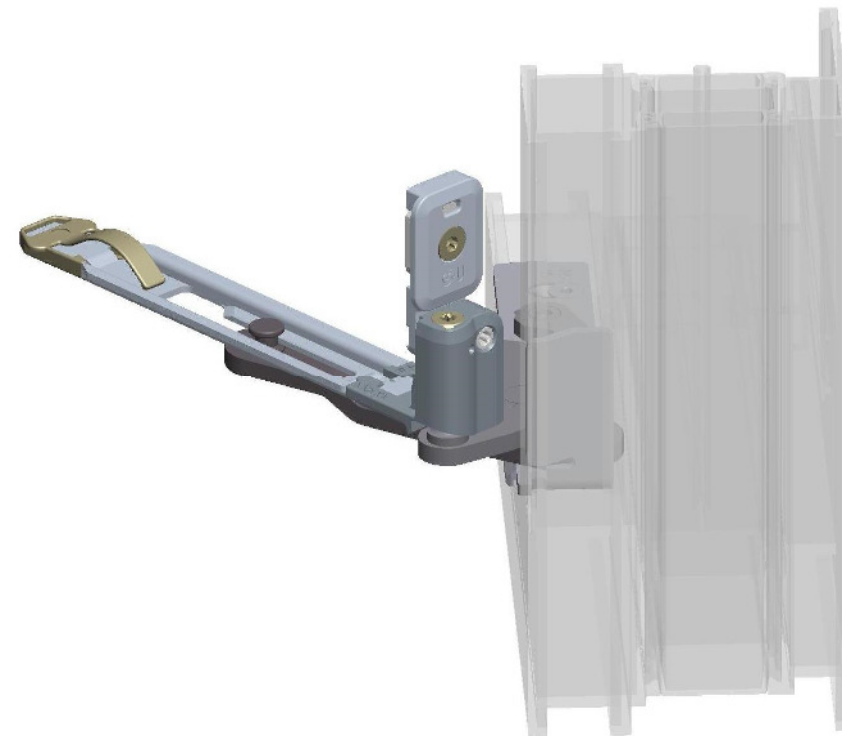
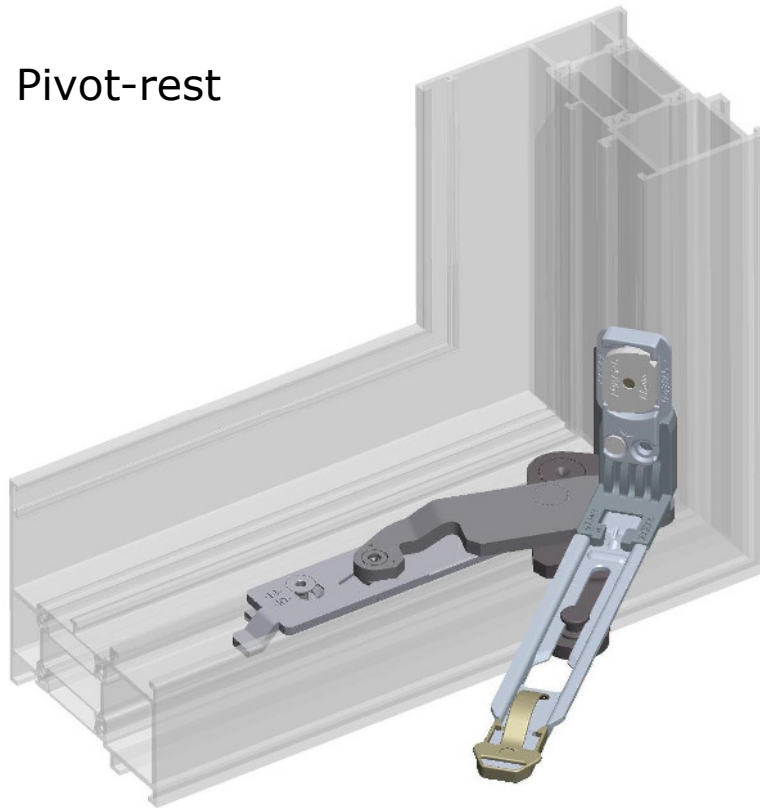


ALU- 06 modular hardware system

ALU- CC606 hinge-side

26

Pivot-rest



- Frame groove 10/14 and 14/18 (12/15 on request)
- Completely clampable

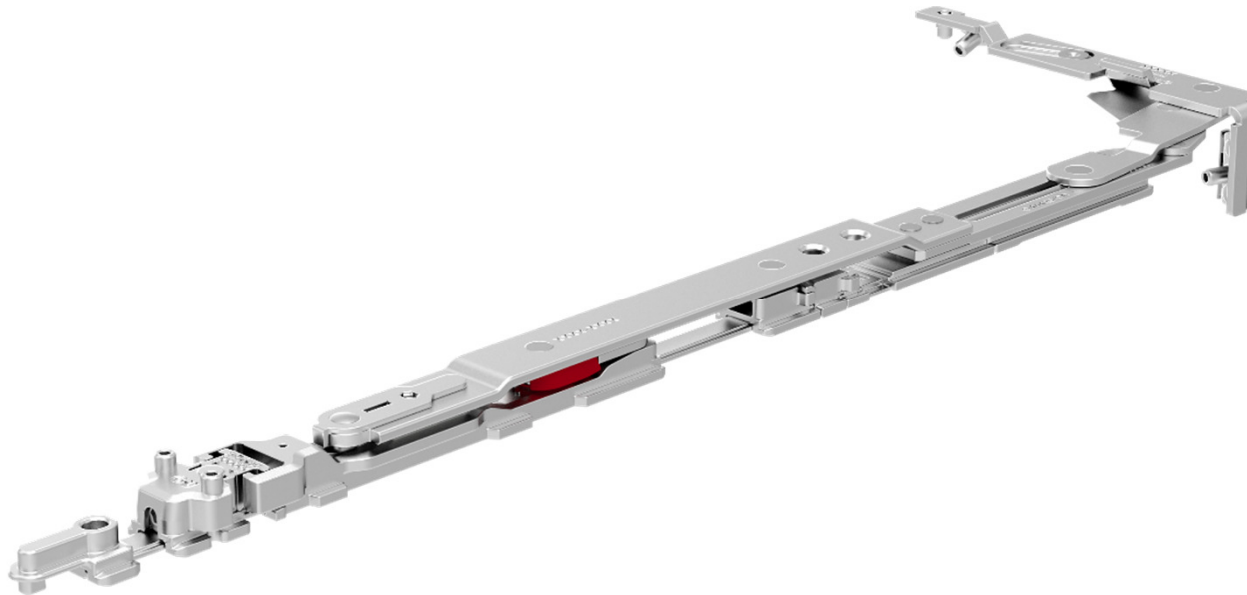
- Max. sash weight 150 kg without additional parts
- SW 500–1600 mm, SH 500–2800 mm

ALU- 06 modular hardware system

ALU-CC606 hinge-side

27

Stay



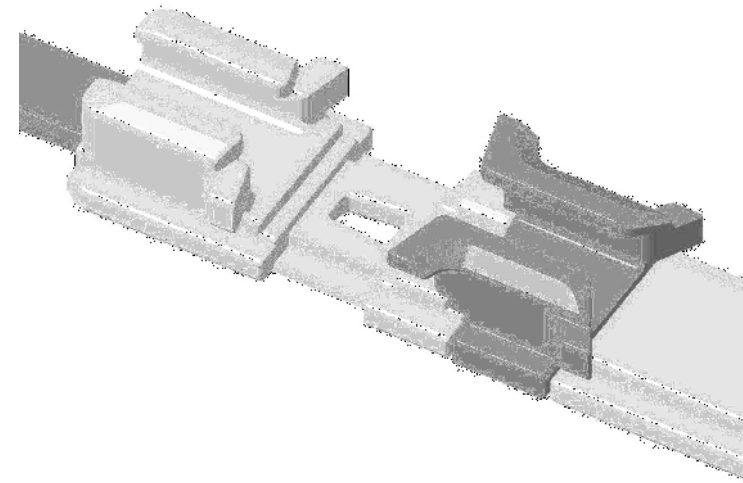
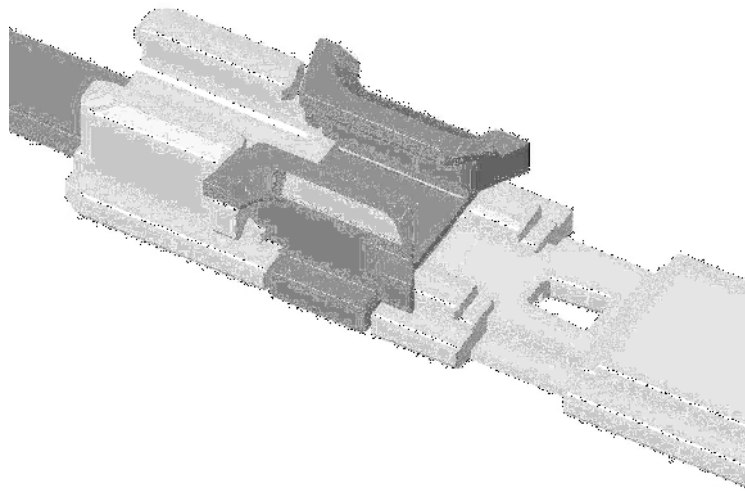
- 2 sizes (SW 500–800, 801–1600 mm) + additional stay (1351–1600 mm)
- Clampable for all frame grooves 10/14 up to 14/18

ALU- 06 modular hardware system

ALU- CC606 hinge-side

29

Stay



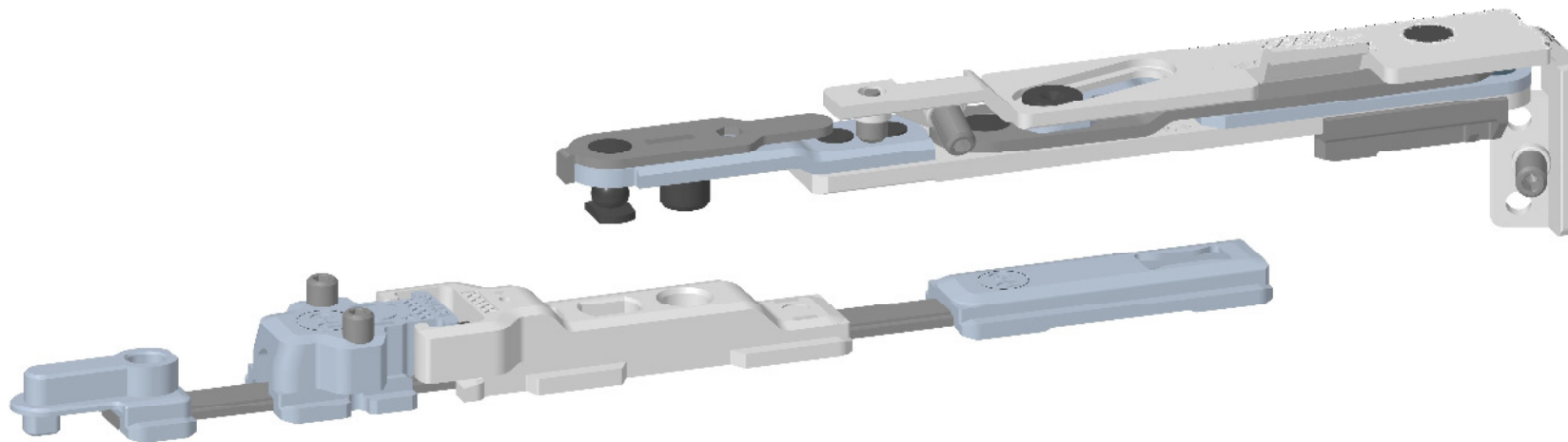
- Only one version for T&T and TF
- Changing from T&T to TF is done by displacing the insert on the stay-guide

ALU- 06 modular hardware system

ALU- CC606 hinge-side

30

Turn-Only hinge and Tilt-Only hinge



- Possibility to lead the central locking system all the way through using additional components
- Low sash widths possible: SW 230/310 mm (with/without possibility of operation through of central locking system)
- Horizontal adjustment at the set screw

ALU- 06 modular hardware system

ALU- S800 D

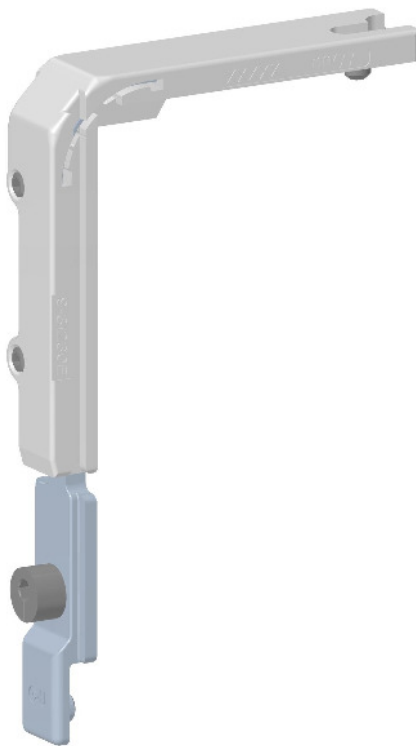
- Face-fixed Turn-Only hinge for sash weights up to 300 kg
- Timeless design for high-class facade elements
- Suitable for all aluminium profile systems with 10/14, 12/15 or 14/18 frame groove
- Suitable for all aluminium profile systems with 15/20 sash Euro-groove
- Hinge-passage min. 7 mm
- Extensive range of surface finishes
- Maintenance-free bearing system



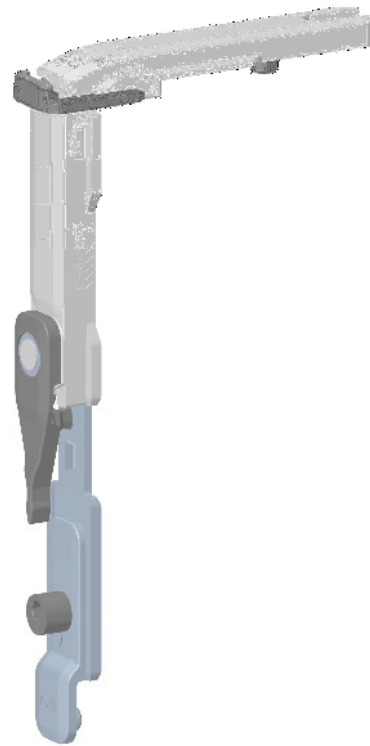
ALU- 06 modular hardware system

35

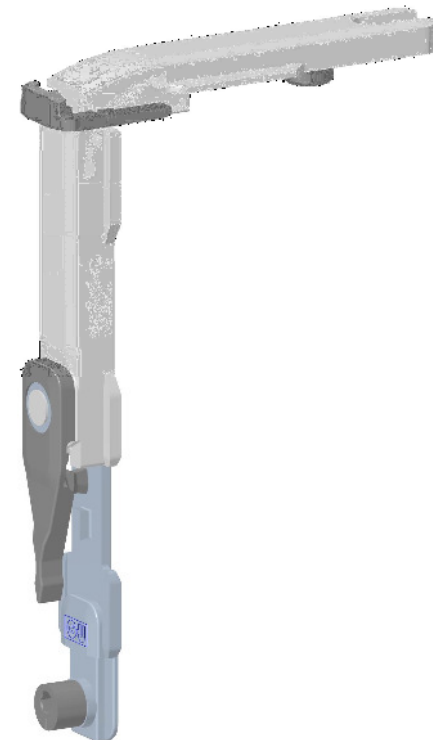
AK 8



"ALU- 06,,



ALU- 10

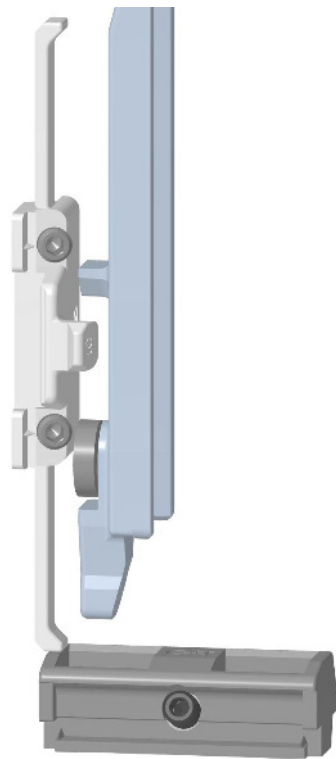


ALU- 06 modular hardware system

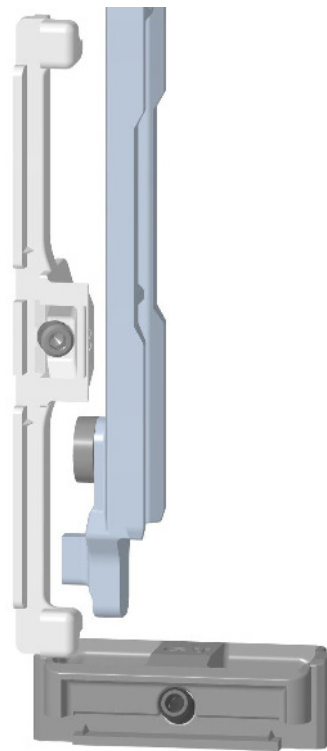
Tilter / T&T striker

36

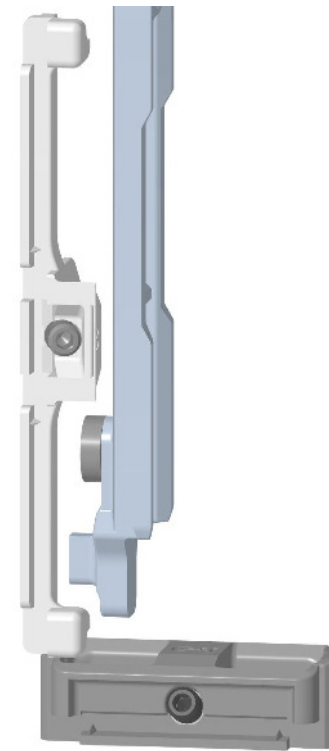
AK 8



"ALU- 06,"



ALU- 10



Modularer Zentralverschluss
Modular central locking system

Verdeckt- und aufliegende Bandseiten
Concealed and face-fixed hinge-side

ALU-JET 610

ALU-JET S800

ALU-JET CC610

